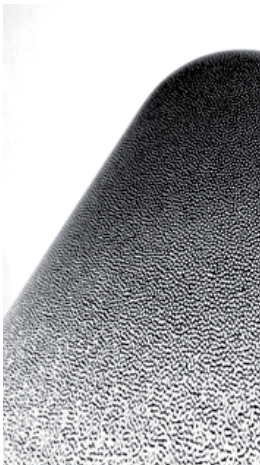




Konica

design
Carlo zumi
2016



Certificaciones Certifications	Bombillas Lamping	Medidas Dimensions	Base metálica Metal finish	Material Material	Color Color	Código Item#	Tipología Type
⊕ ▼ CE IP20	Halógena / Halogen Max 1x25W E27 N. America / Japan Incandescent Max 1x25W E26 120v		Latón / Brass	Metacrilato / Methacrylate	Transparente / transparent	9117-01	KONICA SUSPENSIÓN PENDANT
			Negro / Black	Metacrilato / Methacrylate	Transparente / transparent	9117-02	

Nota

Longitud cable 2m / Wire length
79"

⊕ ▼ CE IP20 	Halógena / Halogen Max 1x25W E27 N. America / Japan Incandescent Max 1x25W E26 120v		Metacrilato / Methacrylate	Transparente / transparent	9118-01	KONICA PIE FLOOR
---------------------------------	--	--	----------------------------	----------------------------	---------	-------------------------------